



Waiata: *He Hōnore*

He hōnore, he korōria
Maungārongo ki te whenua

Whakaaro pai e
Ki ngā tangata katoa

Ake ake, ake ake
Āmine

Te Atua, te piringa,
Toku oranga



Australasian College
for Emergency Medicine

Te Rautaki Manaaki Mana

Excellence in Emergency Care for Māori

MAY 2019 – APRIL 2022





Simon Judkins, President & John Bonning, President Elect

Kia hora te marino
Kia whakapapa pounamu te moana
Hei huarahi mā tātou I te rangi nei
Aroha atu aroha mai
Tātou i a tātou i ngā wā kātoa
Hui e tāiki e.

May peace be widespread
May the sea be smooth like
greenstone
A pathway for us all this day
Give love, receive love
Let us show respect for each other.



Australasian College
for Emergency Medicine

Te Rautaki Manaaki Mana

Excellence in Emergency Care for Māori

MAY 2019 – APRIL 2022





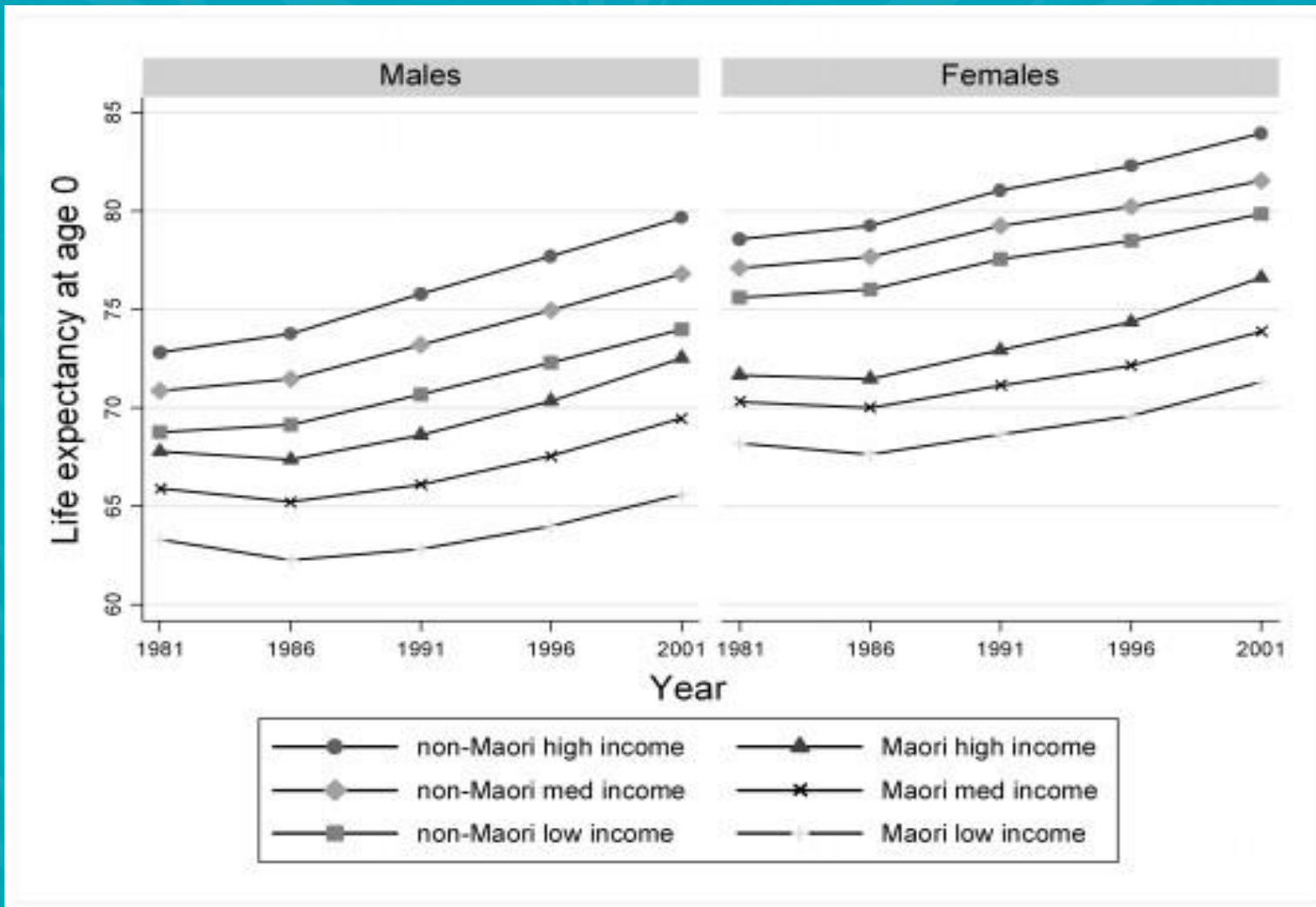




	Māori version	English version
Article one	Māori allow the crown “te kawanatanga katoa” (governorship) over NZ	Māori cede sovereignty to the British crown
Article two	Māori retain tino rangatiratanga (absolute chieftanship/supremacy over lands and all treasured things)	Crown guarantees undisturbed possession over lands, forests, fisheries and other properties
Article three	Māori given the same protection, rights and privileges as British subjects	

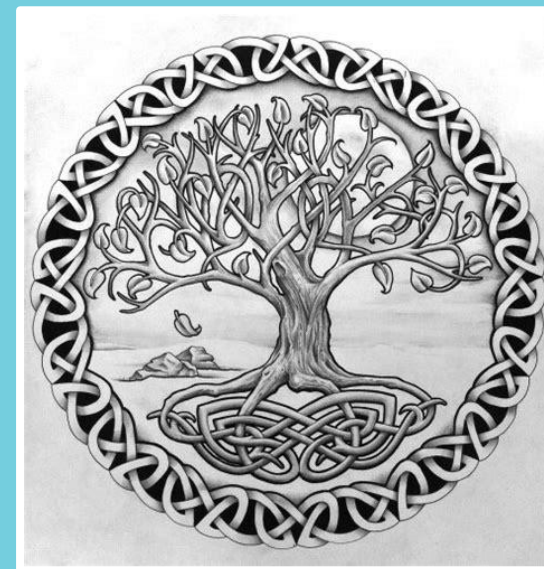
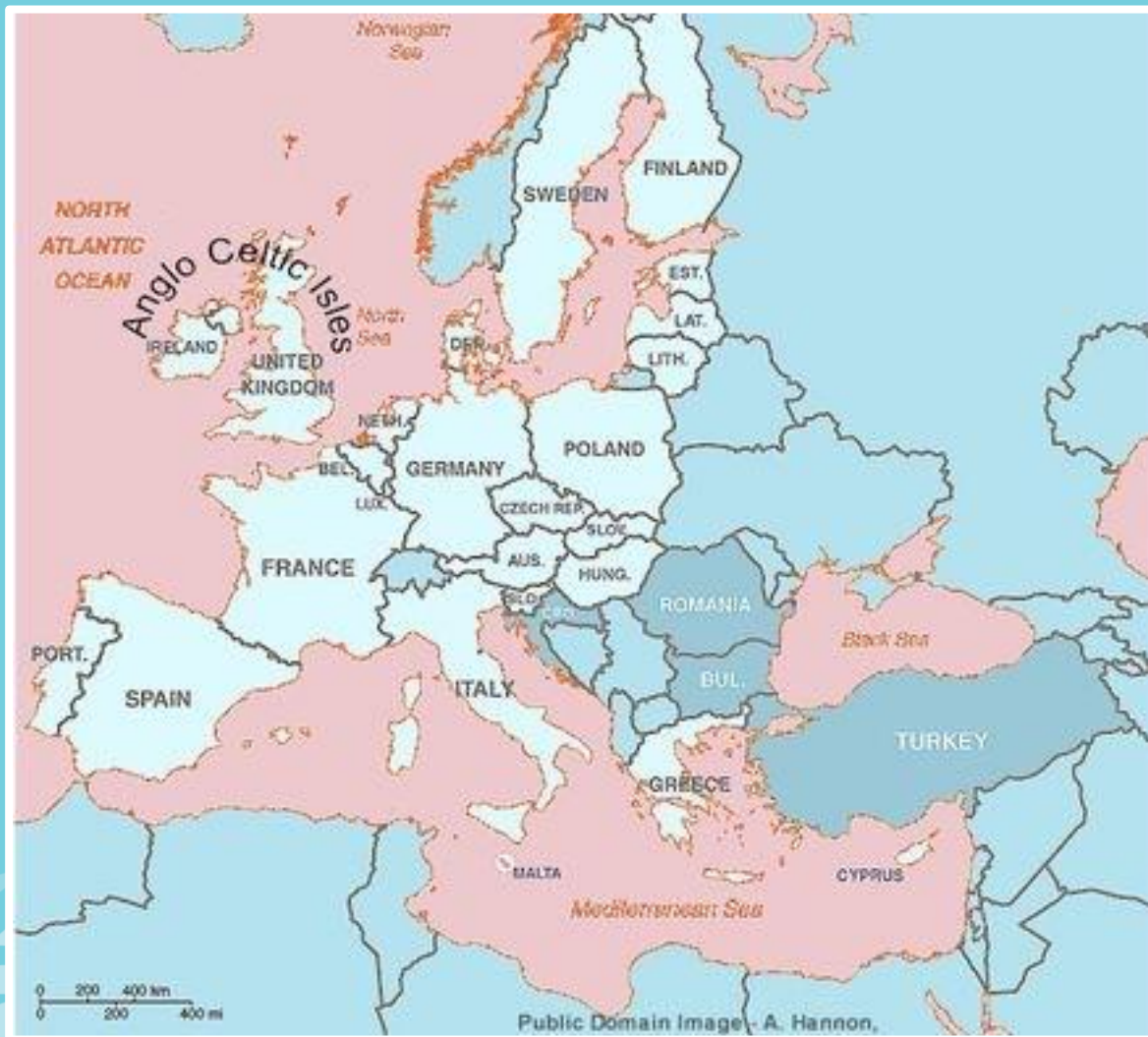


Life expectancy at birth for Māori and Non-Māori by income and gender



Trends in survival and life expectancy by ethnicity, income and smoking in New Zealand: 1980s to 2000s; Kristie N Carter, Tony Blakely, Matthew Soeberg ; New Zealand Medical Journal; 13th August 2010, Volume 123 Number 1320





I 
NZ

AROHA
LOVE



**KEEP
CALM
AND LEARN
TE REO
MAORI**

Manaaki Mana: the story begins...



Acknowledgements: Pip Stuart, Whetu Scott, Carol Dewes, Lisa Reddy,
Moari Stafford, Whaea Tauī

Manaaki Mana: introducing the team

Kate Anson

Inia Tomas *Te Rarawa*

Kim Yates *Te Rarawa, Te Aupōuri, Tainui*

Claire Manning *Kai Tahu, Kati Mamoe, Waitaha*

Inia Raumati *Ngāti Mutunga, Te Atiawa, Ngāti Kahungunu*

Cat Tauri *Te Atehaunui-a-Pāpārangi*

John Bonning

Geoff Hughes

Marama Tauranga *Ngati Maniapoto, Tainui, Taranaki, Ngati Apa*

Tina Konia *Ngāi Tuhoe*

Riki Nia Nia *Ngāi Tūhoe, Ngāti Kahungunu*

Mahanga Maru *Ngāti Porou*

Ange Wadsworth ACEM Project Lead

Fin Bird ACEM Executive Director of Communications and Engagement

Leanne Shuttleworth ACEM New Zealand Office Manager

Manaaki Mana: the process of creating a strategy





Manaakitanga

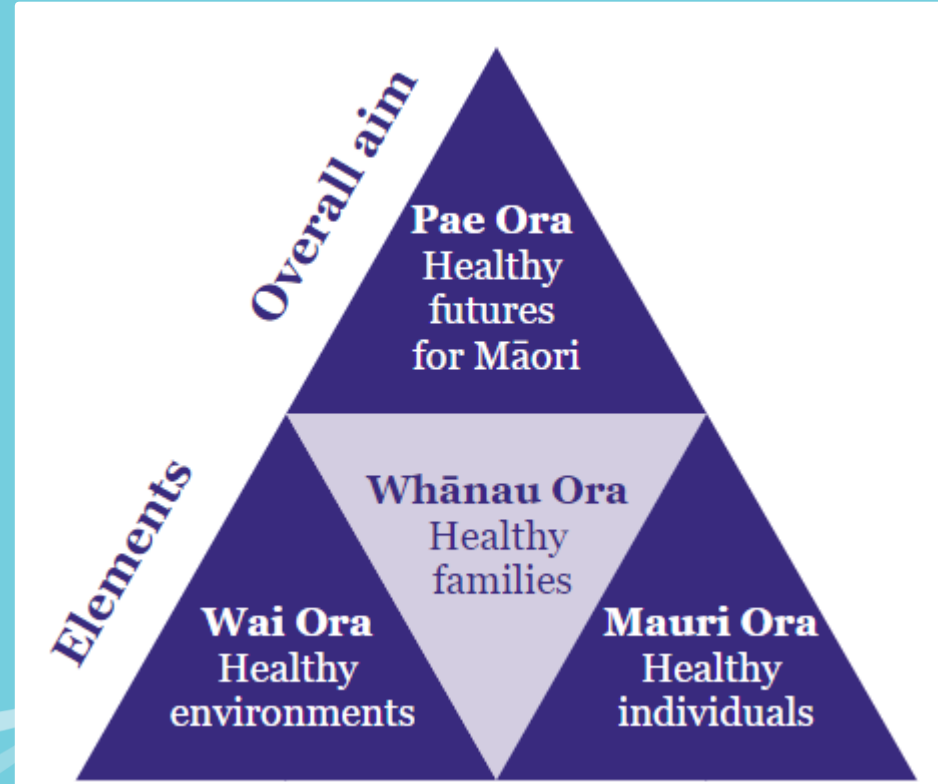
Whakamana

Tika me Pono

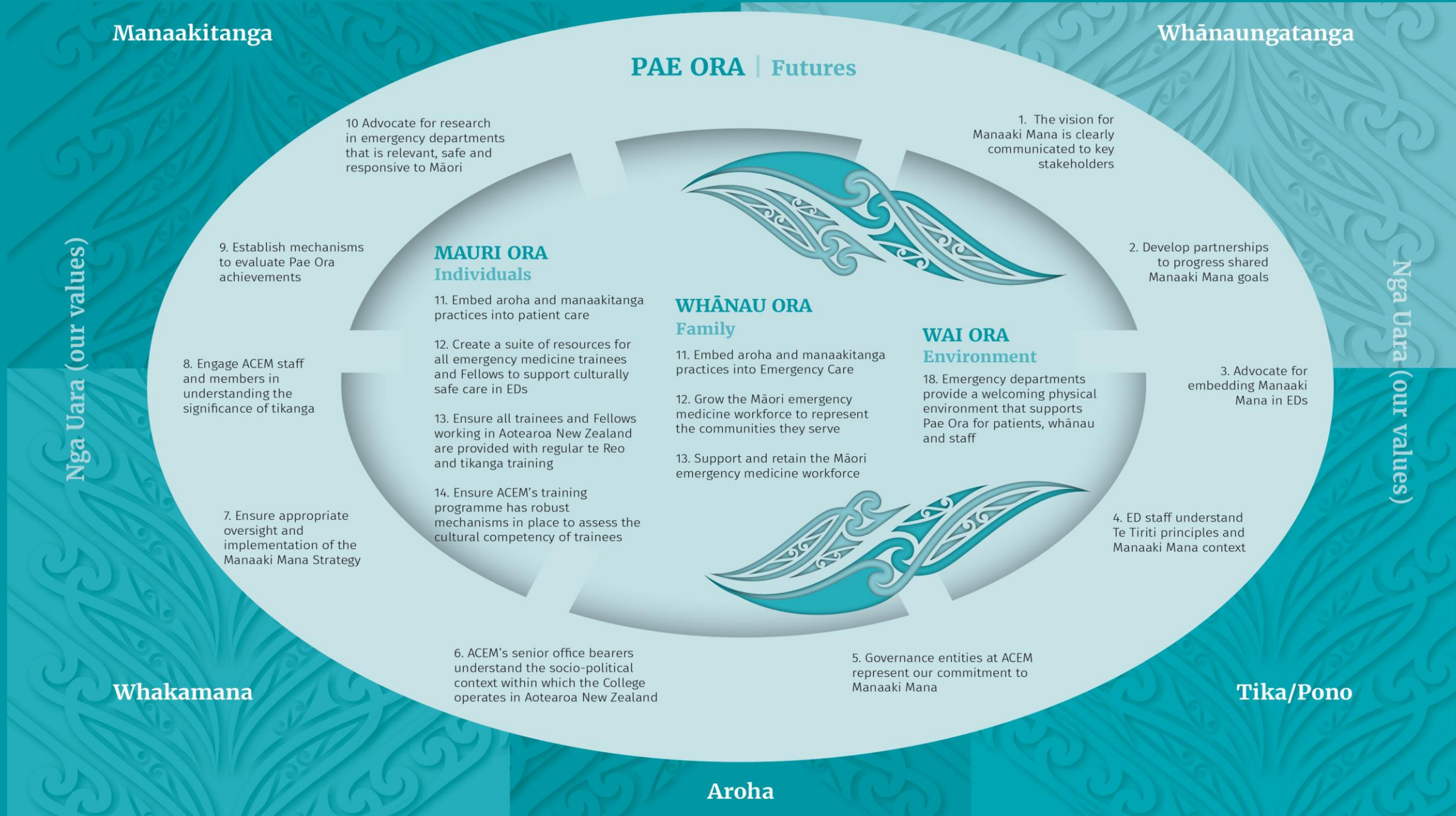
Whanaungatanga

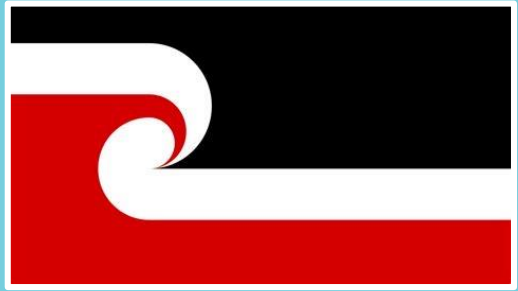
Aroha

He Korowai Oranga



Manaaki Mana Pathways





More Māori FACEMs



Develop standards for equity & excellence



Excellence is not
a skill. It is an
attitude.

RALPH MARSTON

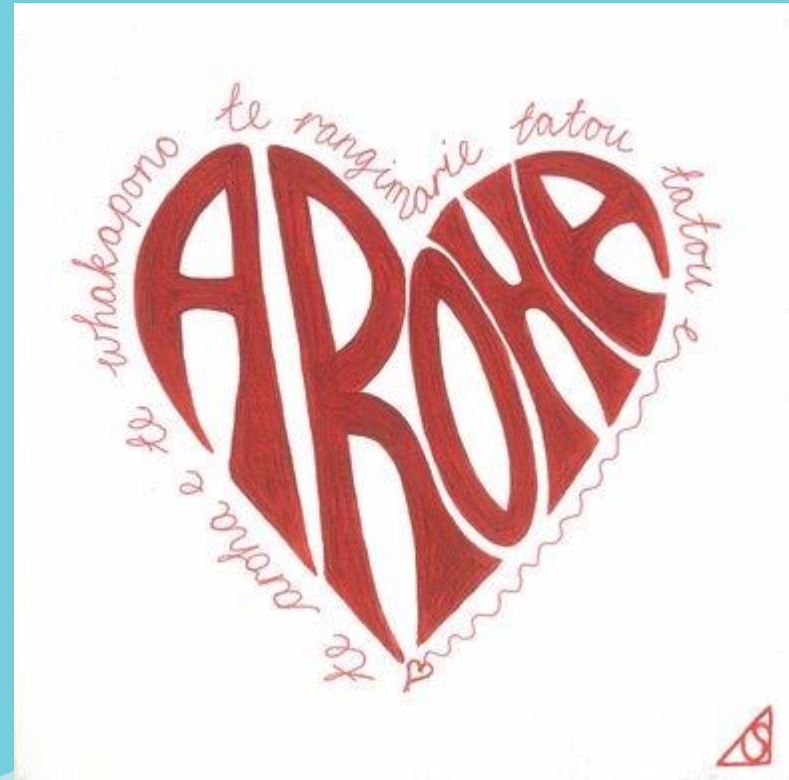


Train & grow a culturally safe workforce





Enhance the ED environment



So what does this mean?

For ACEM.
For your ED.
For you.



So the journey continues:



The background of the slide features a stylized, abstract design of blue waves and swirls. The design is composed of various shades of blue, from light to dark, creating a sense of movement and depth. The waves are depicted with smooth, flowing lines, and the swirls are more intricate, with small, circular motifs. The overall effect is a dynamic and visually appealing background.

Q & A

with the Manaaki Mana Steering Group

Waiata: *Tutira mai ngā iwi*

Tutira mai nga iwi,
tatou tatou e

Tutira mai nga iwi,
tatou tatou e

Whai-a te marama-
tanga,
me te aroha –
e nga iwi!

Ki-a tapatahi,
Ki-a ko-tahi ra

Tatou tatou e
(Repeat)

Ta-tou ta-tou e E!
Hi aue hei!

*Whāia te iti kahurangi, ki te tuohu koe
Me he maunga teitei*



Seek the treasure that you value most dearly
If you bow your head, let it be to a lofty mountain

acem.org.au